



LOCTITE® PC 7383™

Protecting equipment exposed
to high impact conditions

LOCTITE® PC 7383™ Impact, Abrasion and Chemical Resistant Rubber Repair Coating

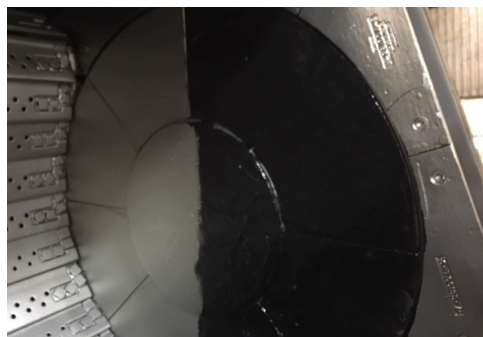
Wear is one of the most common challenges a plant faces. Not protecting your equipment properly from the beginning can be costly. LOCTITE® PC 7383™ is a solvent-free, two-component, and ambient temperature cure polyurethane coating. Its properties allow thick coatings to be applied to vertical surfaces or the underside of horizontal surfaces without slumping or falling off. Apply on installation to protect equipment from wear or to repair worn surfaces.

LOCTITE® PC 7383™

- High Abrasion Resistance
- High Impact Resistance
- High Performance

Used in mines, oil & gas refineries, and power generation plants LOCTITE® rubber repair coatings are built for high impact resistance.

LOCTITE® PC 7383™ is ideal for high impact and abrasion environments such as those found in mines, pulp and paper mills, oil and gas refineries and power generation. Designed to protect rubber as well as metal, this coating is reliable, easy to use, and is backed by Henkel's sales and technical support.





FEATURES AND BENEFITS:

- Easy application
 - + Trowel-able (spreads easily) Highly durable,
 - + Thixotropic: (horizontal & vertical application)
- High impact resistance
- Cure at ambient temperature
- High abrasion Resistance
- Non sag on vertical surfaces

TYPICAL APPLICATIONS:

Ball and SAG Mills, Chutes, Slurry pumps, Hoppers, Elbows, Centrifuges, Hydrocyclone or any metal and rubber surfaces experiencing high impact and wear abrasion.

ADDITIONAL PRODUCTS	IDH	APPLICATION	SIZE
LOCTITE® ETCHING AGENT	IDH# 235638	Enhances bond to rubber	3 fl. oz. bottle
LOCTITE SF 8220™ CLEANER	IDH# 233307	Cleans and primes surfaces	4 fl. oz. can
TERESON® 8519 P™	IDH# 2241589	For metal	100 ml bottle

LOCTITE® PC 7383™ Properties Chart

PRODUCT	APPEARANCE (MIXED)	OPERATING TEMPERATURE	COVERAGE	SERVICE CURE TIME	IMPACT / ABRASION RESISTANCE	HARDNESS	PART NO. / CONTAINER
LOCTITE® PC 7383™	Black Paste	-4° to + 176°F / -20° to + 80°C	6.4 ft² @ 1/4"	24 hours	Excellent	90 Shore A	2395759 / 10kg kit

Contact Your Local Applied® Service Center
1-877-279-2799



DISCLAIMER: The above content is provided by the supplier. Applied® does not guarantee the accuracy or timeliness of the content. The above content is provided "AS IS", AND ANY AND ALL EXPRESS AND IMPLIED WARRANTIES OF MERCHANTABILITY AND FITNESS ARE HEREBY EXCLUDED. All warranties, if any, are solely from the supplier.

Authorized distributor:



Corporate Headquarters
1 Applied Plaza
Cleveland, Ohio 44115
Toll Free Phone: 1-877-279-2799
Applied.com